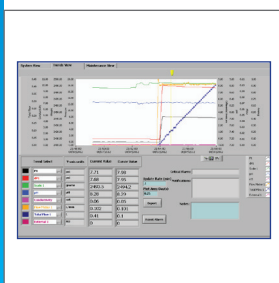


Multi-Sensor Integration For Real-Time Data Management



Diverse Sensor Integration

Reads up to 14 sensors, enabling users to track multiple parameters that are crucial for their applications.



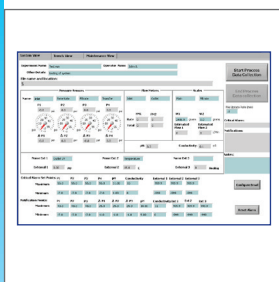
Real-Time Data Analysis

Enables real-time trending and Excel-compatible data export that allows for easy sharing and further analysis.



Automated Safety Features

The system includes alarm outputs that can automatically shut down connected pumps when necessary, enhancing safety during operations.



User-Friendly Interface

The system features a dedicated System View for sensor configuration, a Trends View for data visualization, and a Maintenance View for regular updates.



Comprehensive DAQ System

For Filtration Process Optimization

The DAQ System supports up to 14 sensors, including four METTLER TOLEDO Pendotech pressure sensors, two scales, two flow meters, one pH probe, one conductivity sensor, one air-in-tube detector, and three configurable analog inputs for UV, temperature, and turbidity. It features an alarm output for automatic pump shutoff during alarms. The DAQ PC software offers advanced trending with scaling and comparison, a built-in data server for OPC clients (e.g., PI from OSIsoft), sensor configuration and naming, and customizable analog input settings. It connects via USB and includes System View (sensor/process info entry, data updates every 6 seconds, alarm setpoints with alerts, keypad), Trends View (customizable plots, auto/manual scaling, cursor tool, image export), Data File (.CSV locked during collection with notes column), and Maintenance View (sensor configuration and adjustments). The system uses six-foot reusable cables, ensuring all readings and alarms are managed internally.

METTLER TOLEDO

System View

Users can enter sensor names and process-specific info, which are saved in the .CSV file. Data updates every 6 seconds, with locked inputs during collection. Alarm setpoints can trigger email or text alerts, and a pop-up keypad facilitates numerical entry.

Trends View

Customizable plots allow users to select displayed data, auto-scale axes, or set manual limits. A cursor tool helps compare historical and current data, and plots can be copied as images for reports.

Data File

Generated at the start of data collection, the .CSV file opens in Excel and is locked until collection ends, with a blank notes column for user input.

Maintenance View

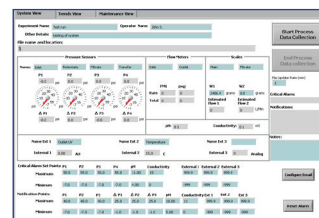
All sensors can be configured here, with some settings requiring one-time setup and others needing adjustments based on changes.

System Specifications

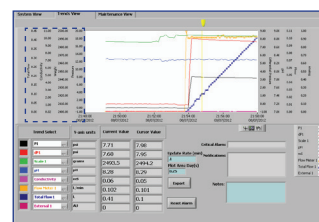
Dimensions (HxWxD)	6.125 inch x 16 inch x 11.5 inch (15.56 cm x 40.64 cm x 29.21 cm)
Weight	20lbs. (9.1kgs.)
Enclosure Material	304 stainless steel
Power Requirements	100 – 240 Volts, 50 – 60 Hertz, 2 amp max
Pressure Sensor Inputs	Pendotech pressure sensors default configuration-other full-bridge type sensors optional
Alarm Output	Dry contact relay 3 – 48 VDC, up to 3 A continuous
Air Detector Input	Digital input with 24 VDC supply
Flow Meter Input	5V digital pulse input with 5 VDC or 24 VDC supply
External Inputs	External 1 and 2: Analog Signal: 4-20 mA External 3: 0-10 V (External 3 can be a generic 0-10V input, or when a system is ordered, configured to accept a direct plug-in of Pendotech single-use temperature sensors without the requirement of an external transmitter). NOT LOOP POWERED, DO NOT APPLY 24 VDC
pH Input	Standard probe input via BNC connector
Conductivity Input	Specifically designed to read the Pendotech single-use conductivity sensor with the K input via the software
Scale Inputs	Settings: 1200 Baud, 7 data bits, odd parity, 1 stop bit, manual print
PC Requirements	Windows 7 or 10, 2 GHz or faster, 4 GB of RAM or more

Ordering Information

Ordering Information	Order Number
Pendotech Sensor Data Acquisition System with alarm functions for 14 sensors/devices & PC Software	PDKT-PCS-DAQ
Pendotech Sensor Data Acquisition System with alarm functions for 14 sensors/devices & PC Software with external 3 configured for Pendotech single-use temperature sensor input	PDKT-PCS-DAQ-T

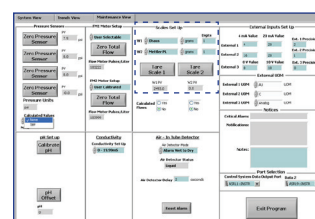


System View



Trends View

Data File



Maintenance View