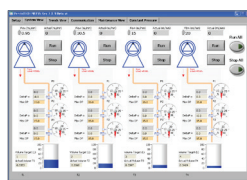


## Optimizing Filter Selection and Screening In Bioprocess Development



### Independent Operation

Supports four filter trains, each with up to three filters, allowing simultaneous studies and increased productivity.



### User-Friendly Interface

Simplifies real-time data monitoring and pump control through an intuitive graphical interface.



### Automated Control

Enables unattended operation with automated pumps and alarms for high pressure, enhancing reliability.



### Comprehensive Data Analysis

Measures additional parameters like turbidity and temperature, providing real-time calculations for effective filtration optimization.



### Normal Flow Filtration Screening System For Enhanced Downstream Bioprocessing Operations

The filtration optimization system is designed for conducting volume throughput studies with up to four independent filter trains, each capable of operating up to three filters. It features a user-friendly graphical interface that allows real-time data acquisition, trending, and automated control of the pumps, which can operate unattended. Each train can measure pressure and weight and can be configured to include additional parameters such as turbidity and temperature. Key functionalities include alarms for high pressure, real-time flux and permeability calculations, and the ability to run multiple constant pressure experiments. The system software features seven intuitive tabs for streamlined navigation: Setup View, System View, Trends View, Analog Trends, Communication View, Maintenance View, and Constant Pressure View/Tab.

**Specifications**

Enclosure Dimensions (HxWxD)	4.8 x 13.8 x 10.3 inch (12.2 x 35.1 x 26.3 cm)
Enclosure Weight	9 lbs (4.1 kg)
Enclosure Material	Aluminum
Power Requirements	100 – 240 Volts, 50 - 60 Hertz, 2 amp max
Pressure Sensor Inputs	Pendotech Pressure Sensors default configuration - other full-bridge type sensors optional
Pump Control (1 for each pump)	Speed control: 4 – 20 mA or 0 – 10 V output
Spare Inputs (standard)	Four of 4 – 20 mA and four of 0 – 10 V inputs

**Ordering Information - System**

Pendotech Normal Flow Filtration Screening System w/ PC software	PDKT-PCS-NFFSS
--	----------------

**Pump Modules**

Peristaltic Pump Module for Pendotech Filter Screening System	PDKT-NFFSS-PPM
Diaphragm Pump Module for Pendotech Filter Screening System	PDKT-NFFSS-PUMP

**Accessories**

Stainless steel stand for filter screening system	PDKT-STAND-NFFSS
Breakout box for analog inputs to 8 connectors (Expansion Module)	PDKT-BOX-NFFSS