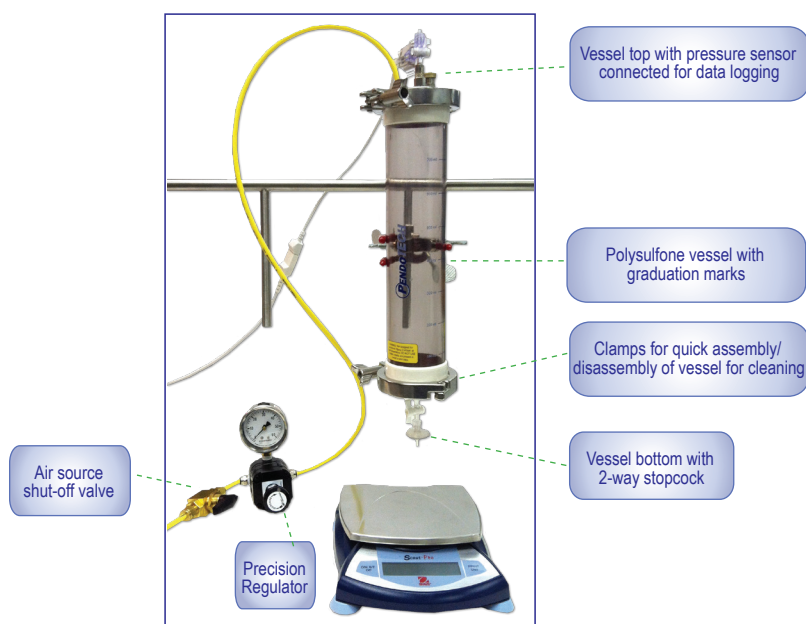


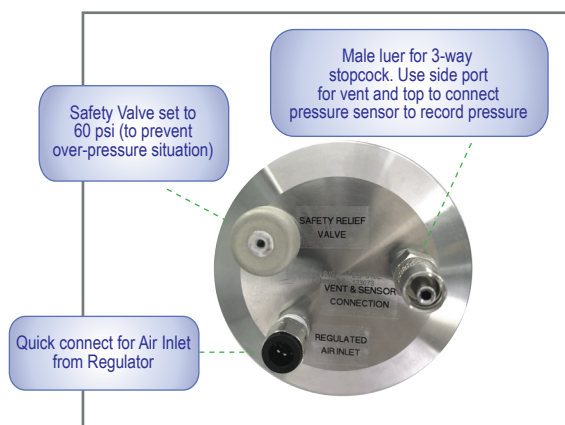
## Pressure Vessel with Regulated Pressure Source

### Product Information & Instructions

The operation is simple - air is supplied through a precision regulator to the Pressure Vessel. When ready to start, the 2-way valve at the bottom outlet of the vessel is opened. The complete setup includes the hardware to attach to a ring stand, but not the stand.



#### Top Detail



#### Bottom Detail



### Instructions

- 1) Air source shut-off valve before the regulator should be closed
- 2) Attach vessel to the ring stand with included hardware
- 3) Attach the vessel bottom with clamp and gasket
- 4) Install 2-way stop cock on the bottom and make sure it is closed (perpendicular to flow path)  
Note: At this point you can fill with water to check for leaks before adding product if desired.  
With water or product follow the following steps
- 5) Fill the vessel with liquid
- 6) Attach top with clamp and gasket
- 7) Install 3-way stop cock on top which can serve as a manual vent and also allow a pressure sensor to be connected to log test pressure
- 8) If desired, attach a piece of tubing with a luer-barb adapter to direct the vent to a specific location
- 9) Install the test filter at the bottom of the 2-way stop cock
- 10) When ready to run, open the air source shut-off valve and regulate the pressure to the vessel
- 11) Simultaneously start the Run-time counter, open Run-time counter is started, open the 2-way stop cock at the bottom of the vessel and liquid flow will start
- 12) When complete, close the air source shut-off valve and pressure may start to drop the 3-way stop cock on top can be used to manually relieve the pressure



**WARNING:** Not designed for use above 60 psi (4.1 bar) at room temperature. Carefully inspect all components prior to use. **DO NOT USE** if cracks are visible in vessel or end caps.

The price includes the hardware to attach to a ring stand, but not the stand.

<b>PDKT-NFFSS-CP</b> - Constant pressure vessel: 2 - 60 psi regulator, 0 - 60 psi gauge, 12 inch polysulfone container (~800mL) with 2.5 inch TC with outfitted endcaps		
<b>Includes:</b>		
PART NUMBER	DESCRIPTION	QTY
MC-6162K13	Precision air regulator 1/4 pipe, 2 to 60 psi range, 150 PSI max input	1
MC-5779K109	Push-to-Connect Fitting adapter for 1/4 inch tube OD X 1/4 inch NPT male pipe	2
MC-5779K108	Push-to-Connect fitting adapter for 1/4 inch tube OD X 1/8 inch NPT male pipe	1
MC-5548K65	Tubing-yellow for push-to-connect fitting; for use with compressed air up to 150 psi at 75° with 1/4 inch OD	4 ft
MC-4003K11-60	Gauge for pressure setting Type 304 stainless steel and lens is polycarbonate.	1
800MLPS	Polysulfone cylinder with 2.5 inch TC ends for 800mL vessel with 2 TC clamps	1
MC-4566K12	Brass ball valve with Yor-lok fittings, ultra-high-pressure, for 1/4 inch tube OD	1
MC-4520K46	2.5 inch sanitary gasket- silicone	2
CP-30600-00	2 way male/female luer stopcock	1
CPV-VENT-60	Vent relief valve with reflector cap with 60 psi cracking pressure	1
CPV-BASE25	Stainless steel base with male luer for polysulfone 800mL vessel with 2.5 inch TC ends	1
CPV-TOP25	316 SS top with male luer, 1/4 inch OD tube QC, and safety vent for polysulfone 800mL vessel with 2.5 inch TC ends	1
CP-08021-16	3 prong clamp to hold vessel	1
CP-08041-20	Holder for clamp for attachment to stand	1
MC-51465K155	Nickel-Plated brass male luer, to 1/8 inch Male NPT	1
PDKT-V3PC-000	Polycarbonate 3-way luer stopcock	1



**WARNING:** PendoTECH assumes no responsibility for the use of this product except for what is covered in the Limited Warranty and Terms and Condition of Sale. They are not designed for any application in which the failure of the product could result in personal injury, death or property damage. It is the customer responsibility for proper assembly, installation, and connection of tubing, filters, fittings, valves and other fluid path components. Customer must take all necessary safety precautions and ensure equipment setup properly and fittings and tubing are properly secured and proper personal protective equipment such as safety glasses and protective shields are used.

For warranty information see our website at <http://www.pendotech.com/warranty>